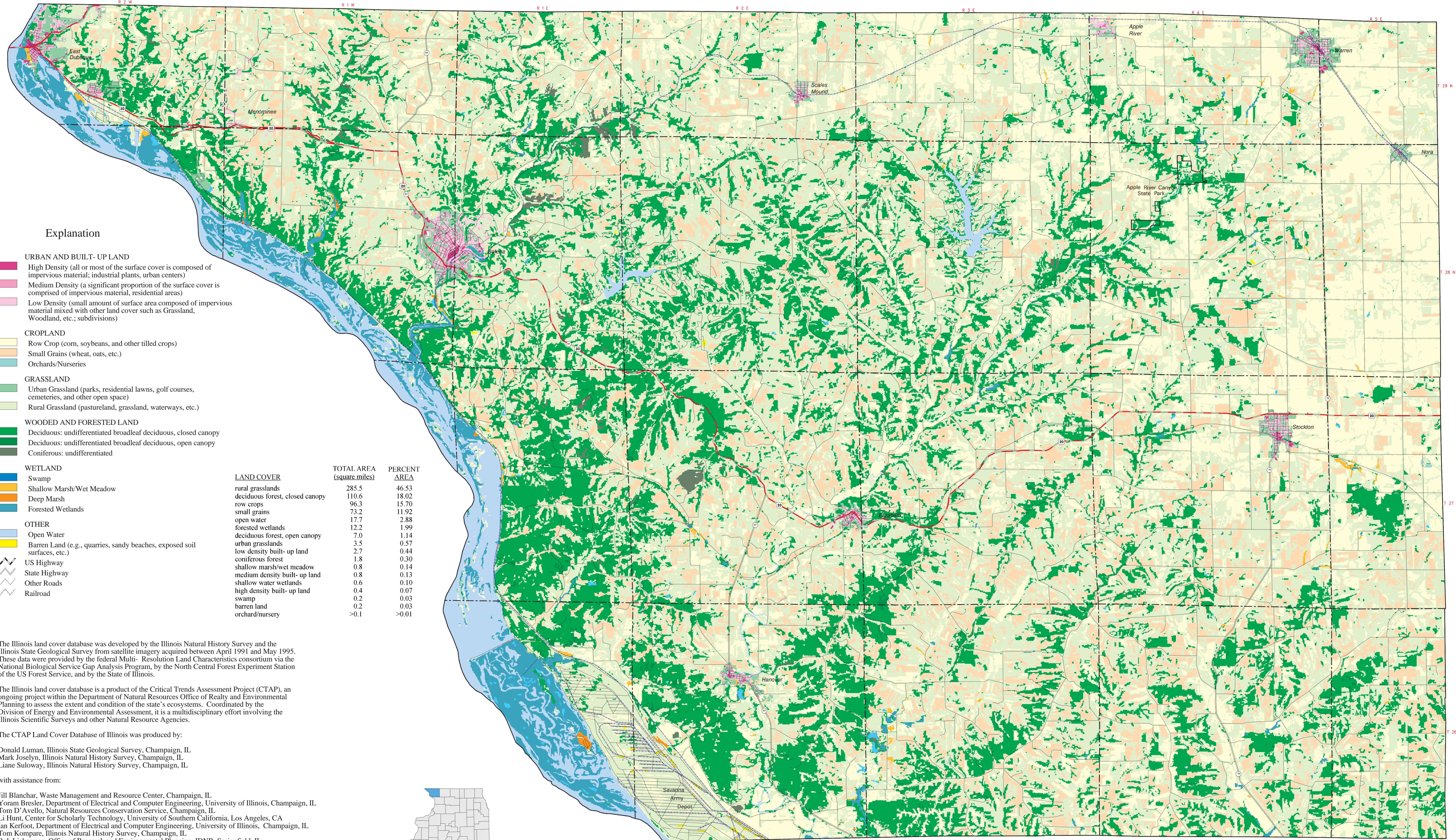


LAND COVER MAP, JO DAVIESS COUNTY, ILLINOIS

Compiled by Christopher S. McGarry



Explanation

- URBAN AND BUILT-UP LAND**
- High Density (all or most of the surface cover is composed of impervious material; industrial plants, urban centers)
 - Medium Density (a significant proportion of the surface cover is comprised of impervious material, residential areas)
 - Low Density (small amount of surface area composed of impervious material mixed with other land cover such as Grassland, Woodland, etc.; subdivisions)
- CROPLAND**
- Row Crop (corn, soybeans, and other tilled crops)
 - Small Grains (wheat, oats, etc.)
 - Orchards/Nurseries
- GRASSLAND**
- Urban Grassland (parks, residential lawns, golf courses, cemeteries, and other open space)
 - Rural Grassland (pastureland, grassland, waterways, etc.)
- WOODED AND FORESTED LAND**
- Deciduous: undifferentiated broadleaf deciduous, closed canopy
 - Deciduous: undifferentiated broadleaf deciduous, open canopy
 - Coniferous: undifferentiated
- WETLAND**
- Swamp
 - Shallow Marsh/Wet Meadow
 - Deep Marsh
 - Forested Wetlands
- OTHER**
- Open Water
 - Barren Land (e.g., quarries, sandy beaches, exposed soil surfaces, etc.)
 - US Highway
 - State Highway
 - Other Roads
 - Railroad

LAND COVER	TOTAL AREA (square miles)	PERCENT AREA
rural grasslands	285.5	46.53
deciduous forest, closed canopy	110.6	18.02
row crops	96.3	15.70
small grains	73.2	11.92
open water	17.7	2.88
forested wetlands	12.2	1.99
deciduous forest, open canopy	7.0	1.14
urban grasslands	3.5	0.57
low density built-up land	2.7	0.44
coniferous forest	1.8	0.30
shallow marsh/wet meadow	0.8	0.14
medium density built-up land	0.8	0.13
shallow water wetlands	0.6	0.10
high density built-up land	0.4	0.07
swamp	0.2	0.03
barren land	0.2	0.03
orchard/nursery	>0.1	>0.01

The Illinois land cover database was developed by the Illinois Natural History Survey and the Illinois State Geological Survey from satellite imagery acquired between April 1991 and May 1995. These data were provided by the federal Multi-Resolution Land Characteristics consortium via the National Biological Service Gap Analysis Program, by the North Central Forest Experiment Station of the US Forest Service, and by the State of Illinois.

The Illinois land cover database is a product of the Critical Trends Assessment Project (CTAP), an ongoing project within the Department of Natural Resources Office of Realty and Environmental Planning to assess the extent and condition of the state's ecosystems. Coordinated by the Division of Energy and Environmental Assessment, it is a multidisciplinary effort involving the Illinois Scientific Surveys and other Natural Resource Agencies.

The CTAP Land Cover Database of Illinois was produced by:

Donald Luman, Illinois State Geological Survey, Champaign, IL
 Mark Joselyn, Illinois Natural History Survey, Champaign, IL
 Liane Suloway, Illinois Natural History Survey, Champaign, IL

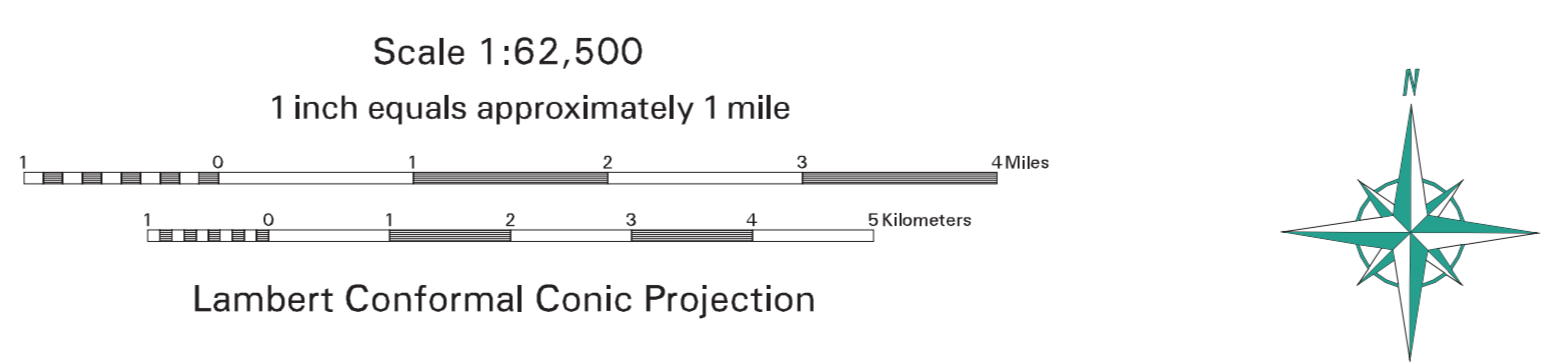
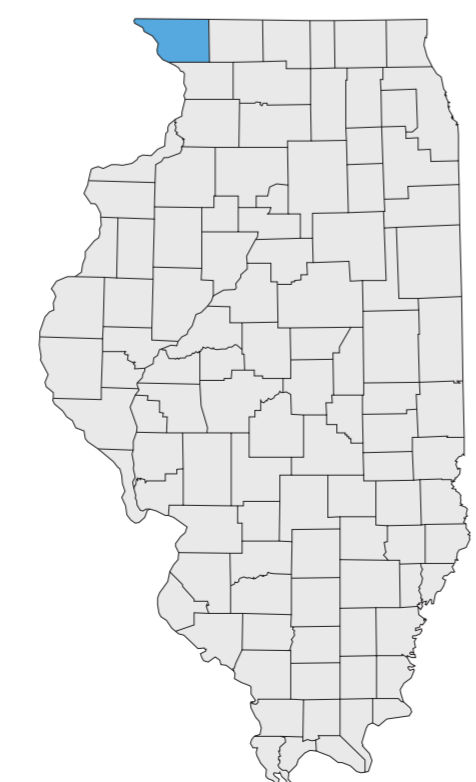
with assistance from:

Jill Blanchar, Waste Management and Resource Center, Champaign, IL
 Yoram Bresler, Department of Electrical and Computer Engineering, University of Illinois, Champaign, IL
 Tom D'Avello, Natural Resources Conservation Service, Champaign, IL
 Li Hunt, Center for Scholarly Technology, University of Southern California, Los Angeles, CA
 Ian Kerfoot, Department of Electrical and Computer Engineering, University of Illinois, Champaign, IL
 Tom Kompare, Illinois Natural History Survey, Champaign, IL
 Bob Lieberman, Office of Research and Environmental Planning, IDNR, Springfield, IL
 Daniel Wendt, North Central Forest Experiment Station, USFS, St. Paul, MN

REFERENCE:
 Luman, D., Joselyn, M. and Suloway, L. (1996) Illinois Land Cover: Illinois Department of Natural Resources/Illinois Scientific Surveys Joint Report 3, Springfield, Illinois.

FOR ADDITIONAL INFORMATION CONTACT:

Illinois State Geological Survey
 Natural Resources Building
 615 East Peabody Drive
 Champaign, Illinois 61820
 (217) 333-4747
<http://www.igs.uiuc.edu>



This map was prepared by the Illinois State Geological Survey, in cooperation with the Illinois Department of Commerce and Community Affairs and the Jo Daviess County Board. It is part of a suite of maps created to assist local government in addressing geologic questions concerning capable sites for landfill development. Maps produced for this study are intended for regional land use planning purposes. More detailed mapping is needed for site-specific considerations. This map has been reviewed for scientific accuracy and edited to meet the quality standards of maps in the ISGS Map Series.